

AC6355

Compact in various circuit configurations

Description

A slip ring capsule can be used in any electromechanical system that requires unrestrained, intermittent, or continuous rotation while transferring power and / or data.

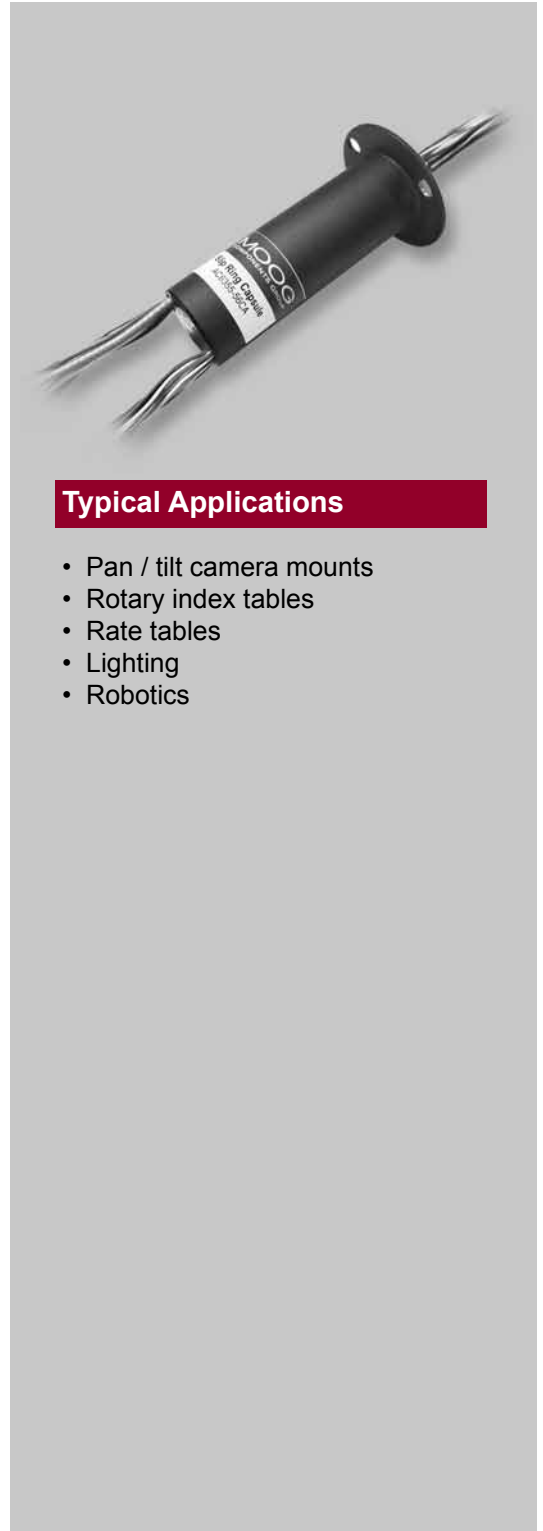
The AC6355 provides an economical, readily available solution when a compact, high circuit count configuration is required. Our standard units, AC6355-36 and AC6355-56 offer 36, 2 amp and 56, 2 amp signal rings, respectively. These units can be modified to provide various combinations of power, signal and coax circuits. Similar in design to our very popular AC6023, this design features gold-on-gold contact technology for ultimate performance in many challenging applications.

Features

- Standard 36 and 56 circuit models with 2 amp circuits
- 2 amp, 5 amp, 10 amp circuit combinations standard; 50 or 75 ohm coax circuit combinations are optional
- Precision ball bearing for long life
- Speeds up to 250 rpm
- Compact size
- Sealed units available (dust and light splash only)
- Metal housing available
- Transfers analog and digital signals
- Compatible with data bus protocols

Benefits

- Unique signal handling performance with minimal electrical circuit noise
- Tight packaging to fit in the most demanding space constraints
- Low torque to minimize system torque budget
- Rapid delivery



Typical Applications

- Pan / tilt camera mounts
- Rotary index tables
- Rate tables
- Lighting
- Robotics

Slip Ring Capsules (Compact)

AC6355 Specifications			Options
Operating Speed	250 rpm*		<ul style="list-style-type: none"> • 48 inch (1200 mm) lead length • Aluminum housing, black anodized • 50 ohm coax, RG178 • 75 ohm coax, RG179 • Splash seals for dust and moisture resistance • Non-flanged housing available • IP 65 rated slip ring available (P/N AC7038)
Circuit Configurations	36 ring	56 ring	
	36 @ 2 amp	56 @ 2 amp	
	4 @ 5 amp; 28 @ 2 amp	4 @ 5 amp; 48 @ 2 amp	
	4 @ 10 amp; 20 @ 2 amp	4 @ 10 amp; 40 @ 2 amp	
Lead Length	24 inch (600 mm)		
Lead Size / Type	2 amp, 26 AWG 5 amp, 20 AWG 10 amp, 16 AWG		
Housing	Plastic		
Voltage	240 VAC		
Operating Temp.	-40°C to +80°C		
Contact Material	Gold		
Electrical Noise	60 milliohms max.		

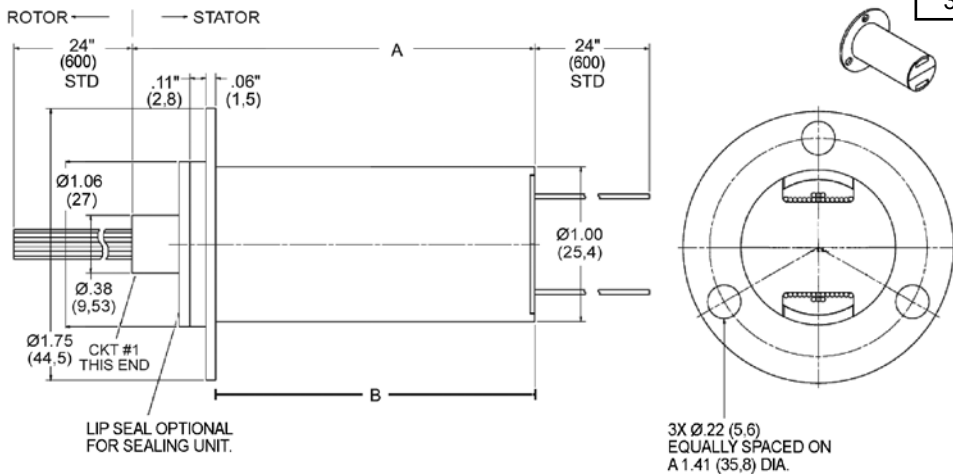
*Please note that the operational life of the unit is dependent upon rotational speed, environment and temperature.

AC6355 Lead Wire Color Codes

Ring #	Color Code	Ring #	Color Code	Ring #	Color Code	Ring #	Color Code	Ring #	Color Code	Ring #	Color Code
1	BLK	11	WHT-BLK	21	RED	31	WHT-RED	41	YEL	51	WHT-YEL
2	BRN	12	WHT-BRN	22	ORN	32	WHT-ORN	42	GRN	52	WHT-GRN
3	RED	13	WHT-RED	23	YEL	33	WHT-YEL	43	BLU	53	WHT-BLU
4	ORN	14	WHT-ORN	24	GRN	34	WHT-GRN	44	VIO	54	WHT-VIO
5	YEL	15	WHT-YEL	25	BLU	35	WHT-BLU	45	GRY	55	BLK
6	GRN	16	WHT-GRN	26	VIO	36	WHT-VIO	46	WHT	56	BRN
7	BLU	17	WHT-BLU	27	GRY	37	BLK	47	WHT-BLK		
8	VIO	18	WHT-VIO	28	WHT	38	BRN	48	WHT-BRN		
9	GRY	19	BLK	29	WHT-BLK	39	RED	49	WHT-RED		
10	WHT	20	BRN	30	WHT-BRN	40	ORN	50	WHT-ORN		

2 amp leads will be color coded and number tagged
5 amp rings will have 20 AWG black lead wire, tagged
10 amp rings will have 16 AWG black lead wire, tagged

AC6355	A	B
56 Ring	3.50 in (88,9 mm)	2.96 (75,3)
36 Ring	2.60 (66,04)	2.06 (52,4)



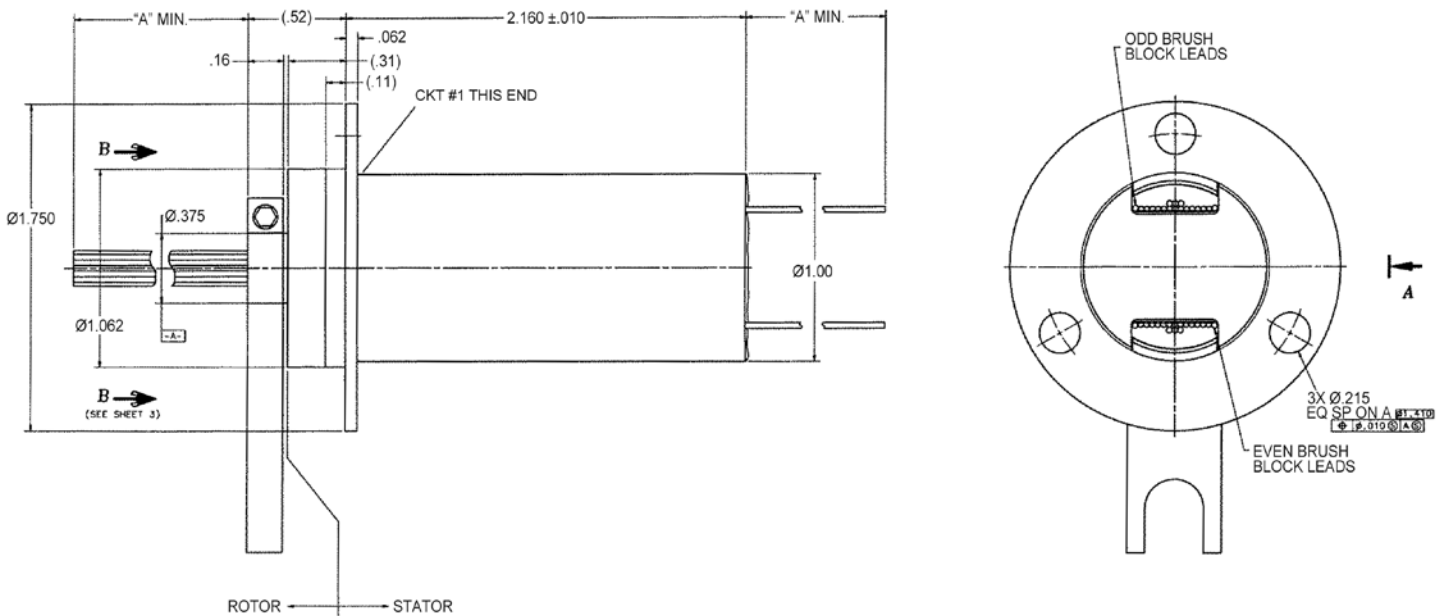
Dimensions in inches (millimeters)

Slip Ring Capsules (Compact)

AC7038 Specifications (IP 65 Sealed Version of AC6355)		Options	
Operating Speed	250 rpm*	<ul style="list-style-type: none"> • 48 inch (1200 mm) length leads • 50 ohm coax, RG178 • 75 ohm coax, RG179 • Splash seals for dust and moisture resistance 	
Circuit Configurations	36 ring		56 ring
	36 @ 2 amp		56 @ 2 amp
	4 @ 5 amp; 28 @ 2 amp		4 @ 5 amp; 48 @ 2 amp
	4 @ 10 amp; 20 @ 2 amp		4 @ 10 amp; 40 @ 2 amp
Lead Length	24 inch (600 mm)		
Lead Size / Type	2 amp, 26 AWG 5 amp, 20 AWG 10 amp, 16 AWG		
Housing	Aluminum housing, black anodized		
Voltage	240 VAC		
Operating Temp.	-40°C to +80°C		
Contact Material	Gold		
Electrical Noise	60 milliohms max.		
Environmental	IP 65 sealed		

*Please note that the operational life of the unit is dependent upon rotational speed, environment and temperature.

AC7038 Dimensions



Dimensions in inches