

## SRA-73683

### *1/2 inch through-bore miniature slip ring capsule*

#### Description

A slip ring capsule can be used in any electromechanical system that requires unrestrained, intermittent or continuous rotation while transferring power and / or data. A slip ring is also called a rotary electrical joint, collector, commutator or swivel. A slip ring can improve system performance by simplifying operations and eliminating damage prone wires.

The SRA-73683 provides an economical, readily available solution when a compact through-bore configuration is required. This unit provides a 1/2 inch through-bore for shaft mounting, a compact 1.375 inch outside diameter and a very short overall length for minimal space applications. The SRA-73683 provides 2 amp circuits in 6, 12, 18 and 24 ring configurations.

#### Features

- 1/2 inch through-bore
- Compact 1.375 inch outside diameter
- Speeds up to 120 rpm continuous
- Continuous rotation of power and / or data signals
- Ethernet model, SRA-73801, available

#### Benefits

- Transfers power, as well as analog and digital signals
- Compatible with data bus protocols
- Compact packaging



#### Typical Applications

- Precision rotary equipment
- Semiconductor handling systems
- Robotics
- Camera systems

# Slip Rings With Through-Bores

## SRA-73683 Specifications

Operating Speed	250 rpm*
Number of Circuits	6, 12, 18, 24
Lead Length	12, 24, 36 and 48 inches
Lead Size / Type	#26 AWG, Teflon® insulated, stranded
Voltage	210 VAC
Operating Temp.	-40°C to +80°C
Contact Material	Gold
Current Rating	2 A, per ring, max.
Electrical Noise	60 milliohm max.

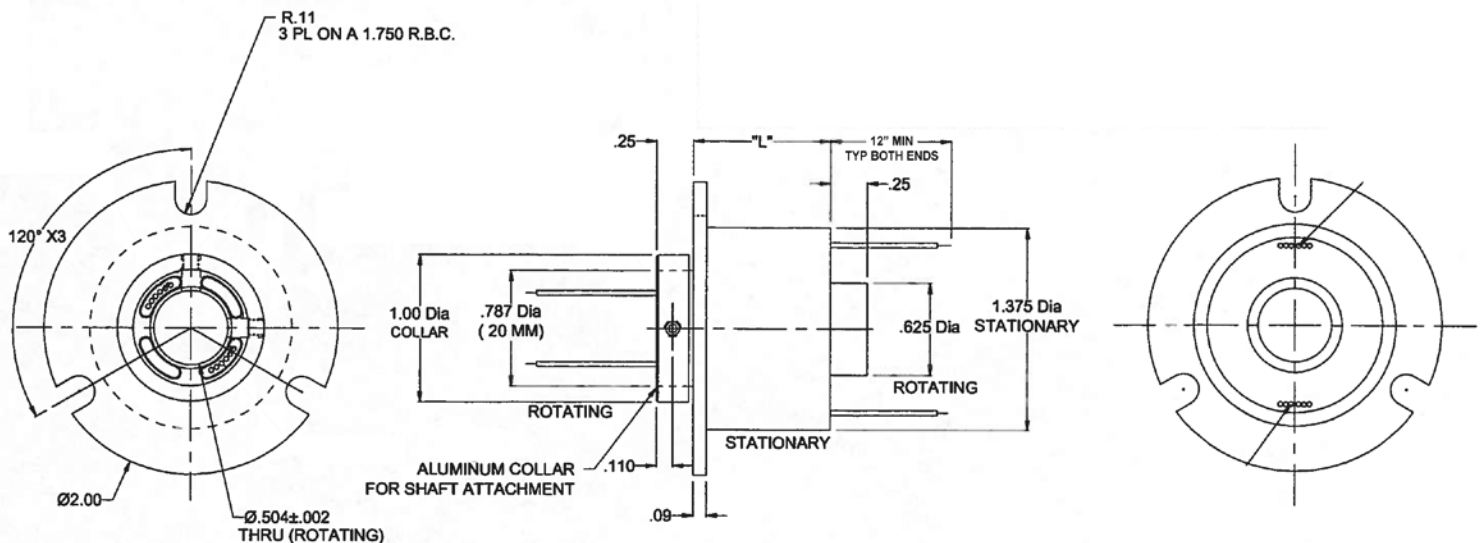
\*Please note that the operational life of the unit is dependent upon rotational speed, environment and temperature.

## Wire Color Code

Ring #	Color	Ring #	Color
1	BLK	13	WHT-RED
2	BRN	14	WHT-ORN
3	RED	15	WHT-YEL
4	ORN	16	WHT-GRN
5	YEL	17	WHT-BLU
6	GRN	18	WHT-VIO
7	BLU	19	WHT-GRY
8	VIO	20	WHT-BLK-BRN
9	GRY	21	WHT-BLK-RED
10	WHT	22	WHT-BLK-ORN
11	WHT-BLK	23	WHT-BLK-YEL
12	WHT-BRN	24	WHT-BLK-GRN

Part Number	Length "L"	Ring Qty.
SRA-73683-6	.82 inch (20,83 mm)	6
SRA-73683-12	1.12 inch (28,45 mm)	12
SRA-73683-18	1.42 inch (36,07 mm)	18
SRA-73683-24	1.72 inch (43,69 mm)	24

## SRA-73683 Dimensions



Dimensions in inches