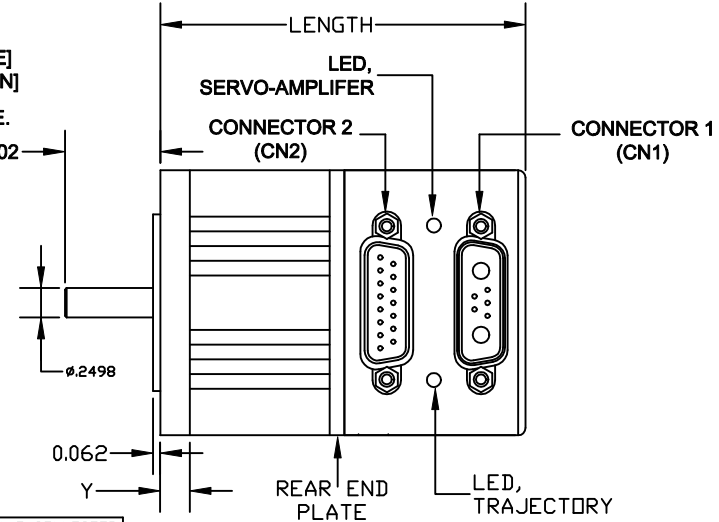
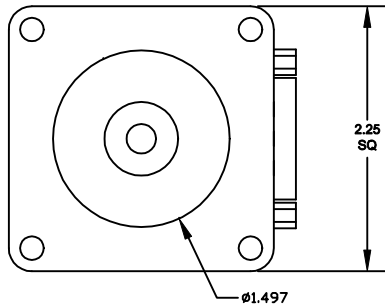


- NOTES: 1) INTERNAL 500 LINE ENCODER , 2000 ENCODER COUNTS PER REVOLUTION. INDEX LINE ON ENCODER WHEEL.
 2) TIED INTERNALLY: TX : CN2 PIN 10 TO CN1 PIN 3
 RX : CN2 PIN 11 TO CN1 PIN 4
 +5V : CN2 PIN 12 TO CN1 PIN 2
 GND : CN2 PIN 13, CN2 PIN 14 AND CN1 PIN 5 TIED TO CN1 PIN A2
 PWR : CN2 PIN 15 TO CN1 PIN A1
 3) FOR HIGH SPEED OR HIGH TORQUE OPERATION USE POWER PIN A1 AND A2 ON CN1.
 4) LED, SERVO-AMPLIFIER INDICATOR: RED = SERVO-AMPLIFIER OFF [DEFAULT STATE]
 GREEN= SERVO-AMPLIFIER ON OR SERVO-ING IN PLACE
 CLEAR = NOT IN CONTROLLED TRAJECTORY [DEFAULT STATE]
 GREEN= IN CONTROLLED TRAJECTORY [CONTROLLED MOTION]
 LED, TRAJECTORY INDICATOR:
 5) FINISH: MOTOR FRONT END PLATE, MOTOR BODY AND CONTROLLER HOUSING IS BLACK ANODIZE.
 MOTOR REAR END PLATE FINISH IS ANODIZE, COLOR LISTED IN TABLE BELOW.

MODEL	COLOR OF REAR END PLATE
SV2310D,SV2320D,SV2330D,SV2340D	BLACK
SV2337D	GREY
SV2337D-T	RED

Peromatic GmbH Peromatic GmbH
 Gubelstrasse 28 rue Confédération 29
 CH-8050 Zürich CH-2300 La Chaux-de-Fonds
 Fon +41-(0)43 300 60 60 Fon +41-(0)32 927 37 20
 Fax +41-(0)43 300 60 79 Fax +41-(0)32 927 37 22
 info@peromatic.ch
 www.peromatic.ch



CONNECTOR 2: 15 PIN D-SUB FEMALE CONNECTOR				
PIN#	NAME	FUNCTIONS	DIGITAL I/O (TTL)	ANALOG INPUT (10 bit)
1	Port A	External Encoder A Input	Step Input	5V 0 to 5V
2	Port B	External Encoder B Input	Direction Input	5V 0 to 5V
3	Port C	Right Limit Input		5V 0 to 5V
4	Port D	Left Limit Input		5V 0 to 5V
5	Port E	Anlink Data	RS-485 Signal A	5V 0 to 5V
6	Port F	Anlink Clock	RS-485 Signal B	5V 0 to 5V
7	Port G	G-Synchronization Pin	RS-485 Adapter Flow Control Line	5V 0 to 5V
8	ENCA OUT	Encoder A Output		
9	ENCB OUT	Encoder B Output		
10	RS232 TX	RS232-Transmit		
11	RS232 RX	RS232-Receive		
12	+5V OUT	+5V Out		
13	GND	Signal Ground		
14	PWR GND	Power Ground		
15	PPOWER	Power, +20V to 48V		

CONNECTOR 1: 7 PIN COMBO D-SUB MALE CONNECTOR		
PIN#	NAME	FUNCTIONS
1	Port G	G-Synchronization Pin
2	+5V OUT	+5V Out
3	RS232 TX	RS232-Transmit
4	RS232 RX	RS232-Receive
5	GND	Signal Ground
A1	PPOWER	Power,+20V to 48V
A2	PWR GND	Power Ground

PART NUMBER	LENGTH [INCH]	'Y' DIM [INCH]
SV2310D	3.170	
SV2320D	3.820	0.250
SV2330D	4.470	
SV2337D	4.540	0.188
SV2337D-T	4.540	
SV2340D	5.120	0.250

ITEM NO.	QTY	PART NO.	DESCRIPTION	MATERIAL SPECIFICATION
PARTS LIST				
UNLESS OTHERWISE SPECIFIED, DIMENSIONS & TOLERANCES ARE PER ANSI Y14.5M AND ARE IN INCHES. TOLERANCES ARE AS FOLLOWS: DECIMALS XXX± ANGLES ± XXXXX±				
MATERIAL: ALUMINUM		THIRD ANGLE PROJECTION		SERVIDA SV23xxD Series
FINISH: SEE NOTE 5		APPROVALS: DATE: 1/8/02		
DRAWN: TC		ENGINEER: SCALE: SIZE: B		TITLE: PART NO. SV2300D REV: 4
CHECKED: ENGINEER: SCALE: SIZE: COMPUTER GENERATED DRAWING		SHEET 1 OF 1		

PART REVISIONS				
ECO	REV	DESCRIPTION	DATE	APPROVED
	1	PRODUCTION RELEASE	1/24/00	
	2	REVISED PINDOUT	10/3/00	
	3	ADDED I/O FUNCTION TO TABLE	2/27/01	
	4	ADD SV2337D-T, ADD NOTE 5	1/9/02	

PART NO.
SV2300D