

- NOTES: 1) TIED INTERNALLY: TX : CN2 PIN 10 TO CN1 PIN 3
 RX : CN2 PIN 11 TO CN1 PIN 4
 2) TIED INTERNALLY: +5V : CN2 PIN 12 TO CN1 PIN 2
 GND:CN2 PIN 14 TO CN1 PIN A2
 PWR : CN2 PIN 15 TO CN1 PIN A1
 3) FOR HIGH SPEED OR HIGH TORQUE OPERATION USE POWER
 PIN A1 AND A2 ON CN1.
 4) REFER TO DRAWING '2315D' FOR MECHANICAL DIMENSIONS

Peromatic GmbH

Gubelstrasse 28
 CH-8050 Zürich

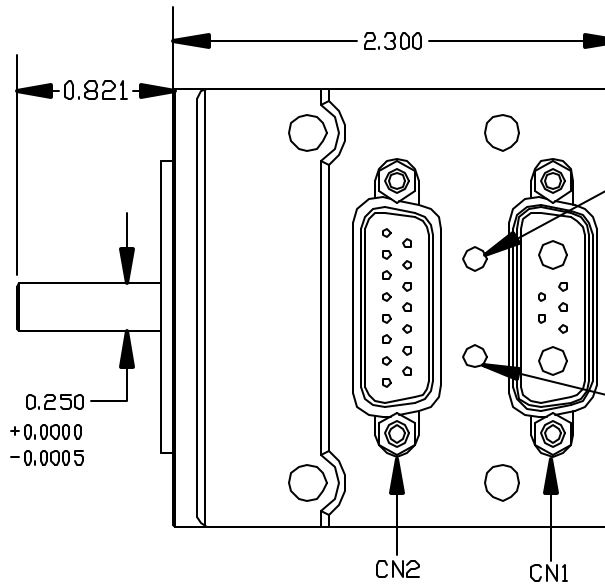
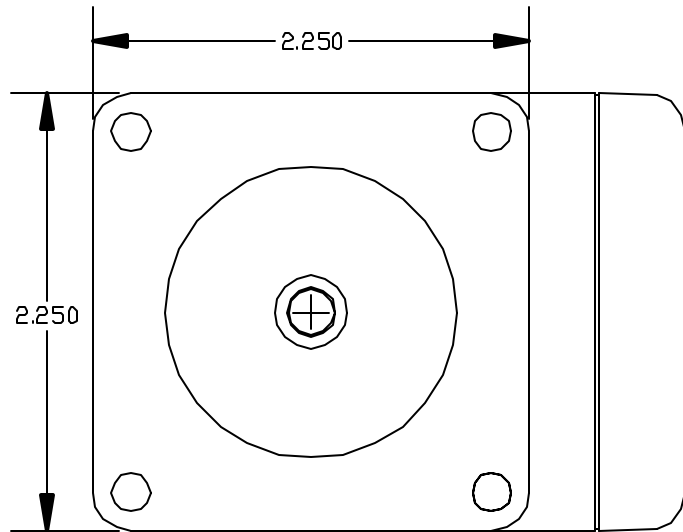
Fon +41-(0)43 300 60 60
 Fax +41-(0)43 300 60 79

info@peromatic.ch
 www.peromatic.ch

Peromatic GmbH

rue Confédération 29
 CH-2300 La Chaux-de-Fonds

Fon +41-(0)32 927 37 20
 Fax +41-(0)32 927 37 22



- LED, SERVO-AMPLIFIER
- RED=AMPLIFIER OFF
[DEFAULT STATE]
- GREEN=AMPLIFIER ON
OR SERVO-ING IN PLACE
- LED, TRAJECTORY
- CLEAR= NOT IN TRAJECTORY
[DEFAULT STATE]
- GREEN= IN A CONTROLLED
TRAJECTORY (MOTION)
OR SERVO-ING IN PLACE

CN2: 15 PIN D-SUB FEMALE CONNECTOR				
SOFTWARE SELECTABLE FUNCTIONS				
PIN#	NAME	SPECIAL FUNCTIONS	DIGITAL I/O (TTL)	ANALOG INPUT (10 bit)
1	Port A	Step Input	5V	0 to 5V
2	Port B	Direction Input	5V	0 to 5V
3	Port C	Right Limit Input	5V	0 to 5V
4	Port D	Left Limit Input	5V	0 to 5V
5	Port E	AniLink Data	5V	0 to 5V
6	Port F	AniLink Clock	5V	0 to 5V
7	Port G	G-Syn/RS485 Adapter Flow Control Line	5V	0 to 5V
8	ENCA OUT	Encoder A Output		
	ENCB OUT	Encoder B Output		
10	RS232 TX	RS232-Transmit		
11	RS232 RX	RS232-Receive		
12	+5V OUT	+5V Out		
13	GND	Signal Ground		
14	PWR GND	Power Ground		
15	POWER	Power, +24v to 48v		

CN1: 7 PIN COMBO D-SUB MALE CONNECTOR		
PIN#	NAME	FUNCTIONS
1	Port G	Go-Synchronization Pin
2	+5V OUT	+5V Out
3	RS232 TX	RS232-Transmit
4	RS232 RX	RS232-Receive
5	GND	Signal Ground
A1	POWER	Power,+24v to 48v
A2	PWR GND	Power Ground

TITLE: SV2315D Pinout	
REV: 3	MATERIAL: CAST ALUMINUM
DATE: 2/28/03	FINISH: BLACK POWDER COAT
TOL: X.XXXX +/- .005 X.XXX +/- .005 INCHES X.XX +/- .01	SERVIDA
UNLESS OTHERWISE NOTED	